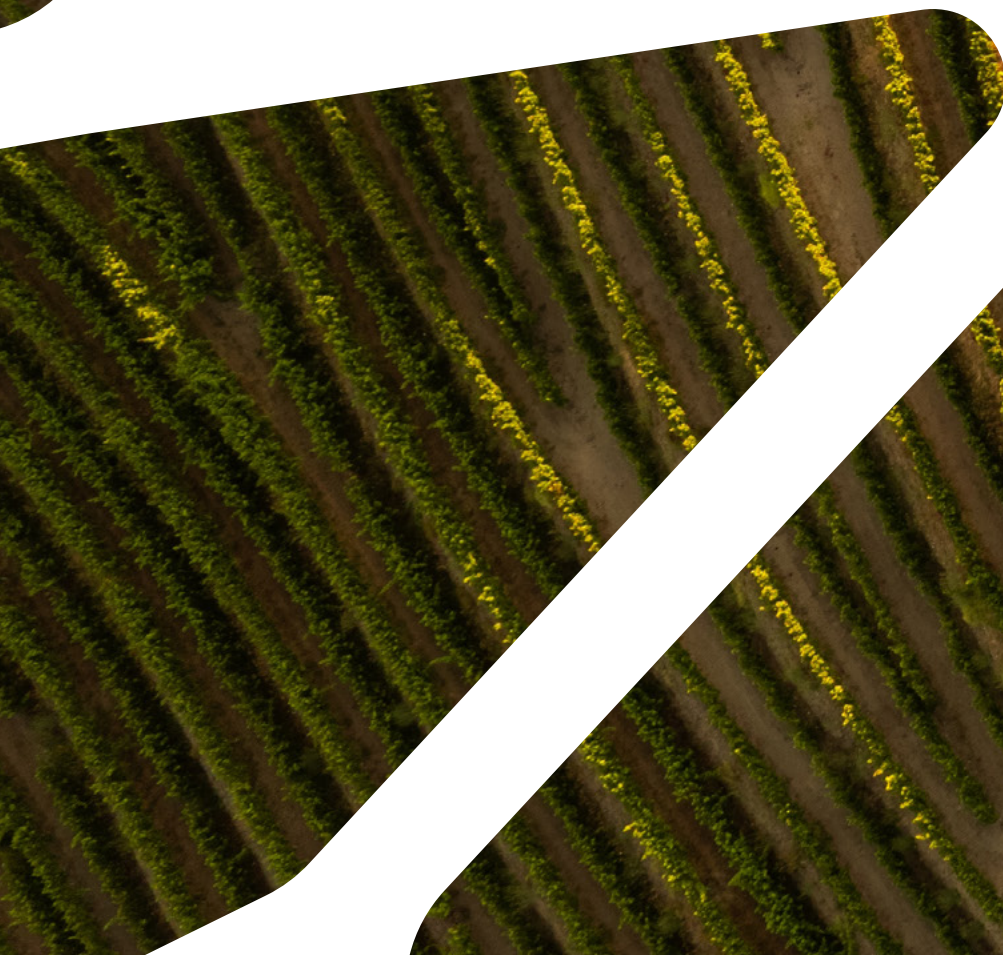




MOSAIC

www.mosaic-europe.eu

Introducing MOSAIC






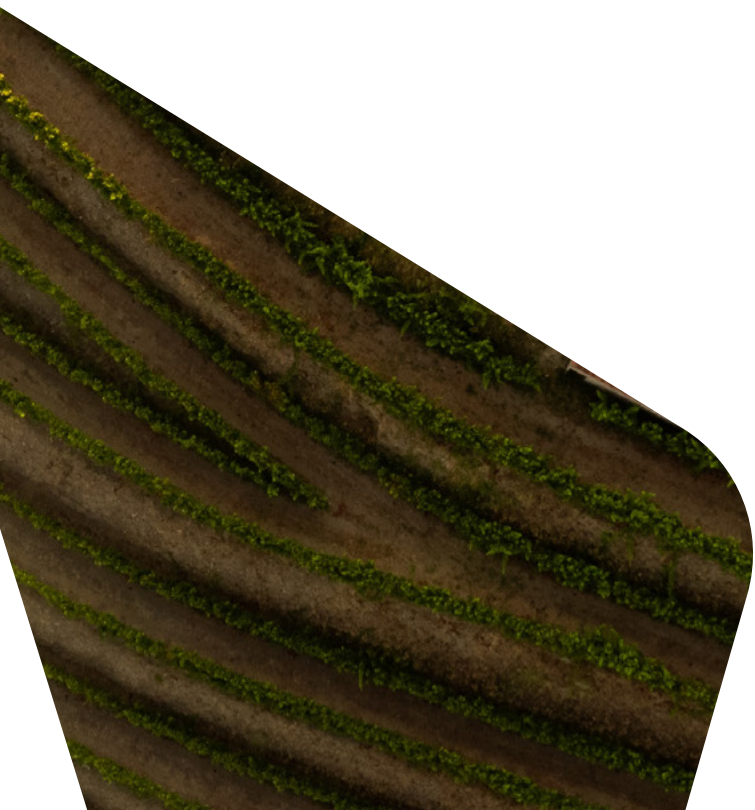
MOSAIC is an EU-funded project that is bringing together twenty organisations for 4½ years to better understand and support sustainable land-use management practices across Europe.

By addressing the overexploitation and unsustainable management of land, the MOSAIC project aims to help Europe adapt to and mitigate the climate and biodiversity crises.

To address these challenges, the MOSAIC project is researching why people currently use land the way they do and to what extent they consider climate change and biodiversity issues when making land-use decisions.

The MOSAIC team will also work with local people and organisations in six case study locations to establish Policy Labs. Each Policy Lab will develop robust policy options and state-of-the-art modelling will be used to explore the impact of these different policies. The MOSAIC policy labs are located in: Belgium, Denmark, Hungary, Portugal, Switzerland, and Europe-wide.

The lessons from MOSAIC's research, modelling and stakeholder engagement will be made available online through a series of tools, which will support in developing and implementing innovative and effective policies.



Find out more at:
www.mosaic-europe.eu

INTRODUCING THE MOSAIC POLICY LABS

Central to the MOSAIC projects are six Policy Labs. We're working with local people and organisations across six locations to understand and influence how land across Europe is managed.



PORTUGAL The Portuguese Policy Lab will focus on the Alentejo Region, an area that represents a third of the country's surface but only 5.2% of the population. Throughout the region, land is being transformed with increased demand for new olive groves, greenhouses and solar energy farms. In the MOSAIC Policy Lab, we aim to co-create policies that can balance the needs of socioeconomic development, climate and biodiversity and regional identity.

DENMARK The Danish Policy Lab aims to better understand how climate projects all over Denmark could be supported through a voluntary carbon market. The Danish Climate Forest Fund was established by law in December 2020 with a means to contribute to the carbon reduction target of the Danish Parliament enabling climate projects focusing on afforestation and rewetting drained peat soils in Denmark, financed through the voluntary carbon market. As part of the MOSAIC Policy Lab, we hope to better understand landowners' motivations for engaging with the foundation and how policies could reduce barriers and enable the fund to scale up.





HUNGARY The Hungary Policy Lab brings together local decision makers, farmers, national parks and policy makers to develop and promote regenerative agriculture and water retention policies. Water loss in central Hungary is currently leading to biodiversity loss and depopulation. However, there are already solutions emerging such as nature-based solutions for water retention and farming methods that reduce soil erosion. In the MOSAIC Policy Lab our aim is to better understand and promote these actions.

SWITZERLAND The Swiss Policy Lab is researching land use changes at high altitudes across the Swiss Alps. The expansion of renewable energy production across the Swiss Alps has fuelled a debate in Switzerland and at the same time other land use changes such as the melting of glaciers and shrub encroachment is occurring. The Swiss Policy Lab is working to develop policy options that balance the trade-offs between protecting biodiversity, generating renewable energy and preserving the beauty of the landscape.





BELGIUM The Belgian Policy Lab will be working in the Flemish Ardennes, one of five Flemish landscape parks approved in October 2023. The landscape is facing various challenges, including climate change and grasslands disappearing in favour of more profitable and intensive agricultural practices. The Focus of the MOSAIC Policy Lab is on developing strategies to maintain and improve the quality of the existing grassland, while taking onto consideration the needs of agriculture, nature, tourism and other actors in a harmonious way.

EUROPE To conserve and restore biodiversity by 2030, the EU Biodiversity Strategy calls for at least 10% of publicly defined land in the EU to have strict protection measures and 20% of the land in the EU to be complemented by other forms of legal protection. The Europe Policy lab is researching the role that Private Land Conservation, voluntary measures by private parties, can play in contributing to European biodiversity goals.



OUR WORK

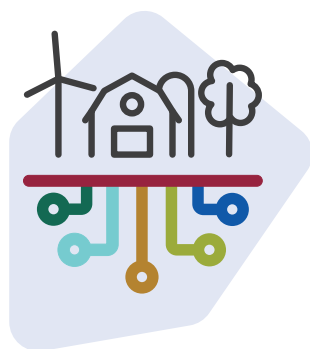


Drivers and decisions

Understanding what drives decision-making around land use in Europe.

Before developing policy recommendations for sustainable land use, we first need to understand why and how land use decisions are made and what influences those decisions.

As part of MOSAIC, we are examining land use drivers, incentives and instruments across Europe and at individual Policy Lab level. We're conducting a thorough study analysing the motivations behind land use changes. We're using a variety of methods such as interviews and focus groups, as well as historical data to look at land use changes in the past.



Modelling

Understanding and predicting how land might be used in the future.

State-of-the-art land use modelling will help MOSAIC to understand how land use across Europe might change in the future and ensure our project policy recommendations have the desired outcomes.

Advanced land use models will be developed and tested in each of our six Policy Labs. These models will combine existing and emerging research with inputs from our stakeholder engagement work. The results are expected to generate predictions on how different policies impact ecosystems, climate regulation, food production, biodiversity and renewable energy, as well as any socioeconomic consequences.



Digital Learning Environment

Developing a virtual platform to support learning.

MOSAIC is creating a digital learning that will bring together resources or services to support decision-making for sustainable land use. Resources or services will be tested by European decision makers, individual countries or local users and improved as we go along. The Policy Labs will also test the various digital tools and services featured in the Digital Learning Environment.

Ultimately, the aim of the Digital Learning Environment is to support land use decision makers in using and developing more innovative and effective policies.

Project Partners



MOSAIC is an EU-funded project working to understand and influence how land-use across Europe is managed.

www.mosaic-europe.eu

www.linkedin.com/company/mosaiclanduse



Co-funded by
the European Union



This work was co-funded by UK Research and Innovation (UKRI) under the UK government's Horizon Europe funding guarantee.

Project funded by



Schweizerische Eidgenossenschaft
Confédération suisse
Confederazione Svizzera
Confederaziun svizra

Swiss Confederation

Federal Department of Economic Affairs,
Education and Research EAER
**State Secretariat for Education,
Research and Innovation SERI**